

AMPACET



MASTERBATCH SOLUTIONS FOR **MOLDING** APPLICATIONS



DRIVEN BY INNOVATION

COMMITTED TO SUSTAINABILITY

For decades now, Ampacet has been developing technically advanced additive solutions, premium quality whites and blacks as well as proposing an extensive palette of colors and special effects, becoming a reliable and solid partner in the plastics industry.

Being a global masterbatch leader, Ampacet embraces its responsibility and provides a wide portfolio of innovative solutions and services that help our customers reach their sustainability goals, thus contributing to preservation of our planet and its natural resources for future generations.



AMPACET WHITE MASTERBATCH RANGE FOR MOLDING



PREMIUM WHITE MASTERBATCHES

Ampacet Premium White Masterbatches are specially designed and recommended for high-end molding applications where premium quality, high whiteness and outstanding performances are required.

									Applications										COMMENTS
CODE	Carrier	Pigment type	Pigment loading	Additives	MFI gram/10 mn	Specific gravity	Bulk density	EU food approved	LDPE		HDPE		PP		PET			PS	
									IM	BM	IM	BM	IM	BM	IM	ISBM	EXT		
1101236-E	PE	TiO2	60%		temp.	1.74	temp.	Y	X	X	X	X	X	X					High quality white offering high whiteness
1101162-E	PE	TiO2	70%		temp.	2.04	temp.	Y	X	X	X	X	X	X					High quality white offering high whiteness
413655	PP	TiO ₂	60%		6 ⁽¹⁾	1.71	945	Y					X	X					High quality white for PP applications
412024-A	PP	TiO ₂	70%		4 ⁽¹⁾	2.00	1110	Y					X	X					High quality white for PP applications
7100212-E	PET	TiO2	60%		NA	2.26	1250	Y							X	X	X		Premium quality white for PET applications
713672-E	PET	TiO2	70%		NA	2.56	1350	Y							X	X	X		Premium quality white for PET applications
7100238-E	PBT	TiO2	60%		NA	2.22	temp.	Y							X	X			Premium quality white for PET applications
7100239-E	PBT	TiO2	70%		NA	2.51	temp.	Y							X	X			Premium quality white for PET applications





STANDARD WHITE MASTERBATCHES

Ampacet Standard White Masterbatches are specially designed and recommended for molding applications requiring good quality standards.

									Applications									COMMENTS
CODE	Carrier	Pigment type	Pigment loading	Additives	MFI gram/10 mn	Specific gravity	Bulk density	EU food approved	LDPE		HDPE		PP		PET		PS	
									IM	BM	IM	BM	IM	BM	IM	BM		
112155	PE	TiO ₂	60%		17	1.73	980	Y	X	X	X	X	X	X				Standard quality white with high shade consistency
112272	PE	TiO ₂	60%	CaCO ₃	Min 2	2.32	1280	Y	X	X	X	X	X	X				Standard quality white with high shade consistency
111844	PE	TiO ₂	70%		16	2.03	1100	Y	X	X	X	X	X	X				Standard quality white with high shade consistency
1101590-E	PE	TiO ₂	38%	CaCo3	20**	2.04	1120**	Y	X	X	X	X	X	X				Standard white with wide regulatory compliance (EU, FDA, Chine) and shade consistency. Suitable for long production runs

COMMODITY WHITE MASTERBATCHES

Ampacet Commodity White Masterbatches are designed and recommended for low-end molding applications.

									Applications									COMMENTS
CODE	Carrier	Pigment type	Pigment loading	Additives	MFI gram/10 mn	Specific gravity	Bulk density	EU food approved	LDPE		HDPE		PP		PET		PS	
									IM	BM	IM	BM	IM	BM	IM	BM		
11987-N	PE	TiO ₂	38%	CaCO ₃	Min 2	2.04	1120	Y	X	X	X	X	X	X				Cost-efficient white for molding applications
11956-N	PE	TiO ₂	48%	CaCO ₃	Min 2	2.22	1240	Y	X	X	X	X	X	X				Cost-efficient white for molding applications
11977-N	PE	TiO ₂	70%		Min 2	2.03	1150	Y	X	X	X	X	X	X				Cost-efficient white for molding applications
11343	PP	TiO ₂	50%		Min 5 ⁽¹⁾	1.48	840	Y					X	X				Cost-efficient white for PP applications
6100-PSR	PS	TiO ₂	60%		14 ⁽⁵⁾	1.91	1060	Y									X	Cost-efficient white for Polystyrene applications

SUSTAINABLE WHITE MASTERBATCHES

Ampacet Sustainable White Masterbatches support the Circular Economy.

									Applications								COMMENTS	
CODE	Carrier	Pigment type	Pigment loading	Additives	MFI gram/10 mn	Specific gravity	Bulk density	EU food approved	LDPE		HDPE		PP		PET			PS
									IM	BM	IM	BM	IM	BM	IM	BM		
1101204-E	r-PE	TiO2	60%		temp.	1.76	temp.	N	X	X	X	X	X	X				White based on 100% PCR carrier
2100004-E	PLA	TiO ₂	60%		NA	2.15	NA	Y										Premium quality white for PLA applications

OTHER SPECIALTY WHITE MASTERBATCHES

Ampacet White Masterbatches also include other specialty grades.

									Applications								COMMENTS	
CODE	Carrier	Pigment type	Pigment loading	Additives	MFI gram/10 mn	Specific gravity	Bulk density	EU food approved	LDPE		HDPE		PP		PET			PS
									IM	BM	IM	BM	IM	BM	IM	BM		
11898-B	PE	TiO ₂	60%		25	1.74	970	Y	X	X	X	X	X	X				Quality bluish white with high consistency
111135-A	PE	TiO ₂	70%		Min 2	2.02	1130	Y	X	X	X	X	X	X				Premium white with excellent organoleptic properties designed for dairy packaging
1100816-E	HDPE	TiO ₂	60%	Antistatic	22	1.85	980	Y			X	X						White with Antistat agent to avoid dust pick up
11173-I	PE	TiO2	45%	Antistatic	Min 5	1.87	1060	Y	X	X	X	X	X	X				White with long term antistatic to avoid dust pick up
112161-EA	PE	TiO2	77%		NA	2.36	1300	Y				X						Off-white for dairy packaging requiring high light barrier protection



⁽¹⁾ 230°C / 2.16 kg - ⁽²⁾ 190°C / 21.6 kg - ⁽³⁾ 190°C / 10 kg - ⁽⁴⁾ 230°C / 10 kg - ⁽⁵⁾ 200°C / 5kg - ⁽⁶⁾ 200°C / 10kg - ⁽⁷⁾ 200°C / 21.6 kg

(**) Temporary Specifications

AMPACET BLACK MASTERBATCH RANGE FOR MOLDING



PREMIUM BLACK MASTERBATCHES

Ampacet Premium Black Masterbatches are specially designed and recommended for high-end molding applications where premium quality and outstanding performances are required.

Name	CODE	Carrier	Pigment type	Pigment loading	Additives	MFI gram/10 mn	Specific gravity	Bulk density	EU food approved	Applications								COMMENTS
										LDPE		HDPE		PP		PET		PS
										IM	BM	IM	BM	IM	BM	IM	BM	
ONYX 1048A	191048-A	PE	N200	40%		30 ⁽³⁾	1.15	650	Y	X	X	X	X	X	X			High quality black for EU food approved applications
ONYX AO 0895	190895	PE	N200	40%	AO	Min 5 ⁽³⁾	1.15	650	Y	X	X	X	X	X	X			High quality black with US FDA compliancy
ONYX PET 0007	7900007-E	PET	N200	30%		NA	1.42	940	Y							X		Premium black with high opacity for PET applications

STANDARD BLACK MASTERBATCHES

Ampacet Standard Black Masterbatches are specially designed and recommended for molding applications requiring good quality standards.

Name	CODE	Carrier	Pigment type	Pigment loading	Additives	MFI gram/10 mn	Specific gravity	Bulk density	EU food approved	Applications								COMMENTS
										LDPE		HDPE		PP		PET		PS
										IM	BM	IM	BM	IM	BM	IM	BM	
ONYX 2531	192531	PE	N200	30%	CaCO ₃	Min 5 ⁽²⁾	1.41	800	Y	X	X	X	X	X	X			Standard quality black for food packaging and industrial applications
ONYX PP 9370A	19370-A	PP	N700	40%		Min 7 ⁽⁴⁾	1.13	620	N					X	X			Standard black for PP non-food applications
ONYX PP 2052	492052	PP	N200	30%	CaCO ₃	Min 2 ⁽⁴⁾	1.39	770	Y					X	X			Standard black for PP food approved applications
ONYX PS 3187	693187-PS	PS	N300	30%	CaCO ₃	20 ⁽⁶⁾	1.39	750	Y									X Standard black with food contact approval for Polystyrene applications
ONYX PS 2044	692044-PS	PS	N200	40%		24 ⁽⁷⁾	1.26	690	Y									X Quality black with food contact approval for Polystyrene applications

COMMODITY BLACK MASTERBATCHES

Ampacet Commodity Black Masterbatches are designed and recommended for low-end molding applications.

										Applications									COMMENTS
Name	CODE	Carrier	Pigment type	Pigment loading	Additives	MFI gram/10 mn	Specific gravity	Bulk density	EU food approved	LDPE		HDPE		PP		PET		PS	
										IM	BM	IM	BM	IM	BM	IM	BM		
ONYX 0515NA	190515-NA	PE	N300	17%	CaCO ₃	Min 10 ⁽²⁾	1.68	910	N	X	X	X	X	X	X				General purpose, cost-efficient black with excellent opacity for non-food applications
ONYX 0120	1900120-E	PE	N300	35%	CaCO ₃	Min 1 ⁽²⁾	1.48	840	N	X	X	X	X	X	X				General purpose, cost-efficient black with excellent opacity for non-food applications
ONYX 9832N	19832-N	PE	N700	40%	CaCO ₃	Min 2	1.37	760	N	X	X	X	X	X	X				Cost-efficient black mainly for industrial applications
ONYX 9836N	19836-N	PE	N700	50%	CaCO ₃	Min 2 ⁽²⁾	1.33	770	N	X	X	X	X	X	X				Cost-efficient black mainly for industrial applications
ONYX 0042	1900042-E	PE	N700	60%		Min 2 ⁽²⁾	1.31	750	N	X	X	X	X	X	X				High loaded cost-efficient black for industrial applications
ONYX 3186	193186	PE	N300	18%	CaCO ₃	Min 2 ⁽³⁾	1.67	900	Y	X	X	X	X	X	X				Cost-efficient black with excellent opacity for food approved applications
ONYX PS 3184	693184-PS	PS	N700	50%		44 ⁽⁷⁾	1.32	740	N									X	General purpose cost-efficient black for Polystyrene applications



OTHER SPECIALTY BLACK MASTERBATCHES

Ampacet Black Masterbatches also include other specialty grades.

										Applications									COMMENTS
Name	CODE	Carrier	Pigment type	Pigment loading	Additives	MFI gram/10 mn	Specific gravity	Bulk density	EU food approved	LDPE		HDPE		PP		PET		PS	
										IM	BM	IM	BM	IM	BM	IM	BM		
ONYX 1048	191048	PE	N200	40%		25 ⁽³⁾	1.15	660	Y	X	X	X	X	X	X				Quality black with excellent organoleptic properties for molding applications and dairy packaging
ONYX COP 0132	1900132-E	UNI	N700	50%		min 30 ⁽²⁾	1.22	700	N	X	X	X	X	X	X				Universal black with high opacity for technical polymers

⁽¹⁾ 230°C / 2.16 kg - ⁽²⁾ 190°C / 21.6 kg - ⁽³⁾ 190°C / 10 kg - ⁽⁴⁾ 230°C / 10 kg - ⁽⁵⁾ 200°C / 5kg - ⁽⁶⁾ 200°C / 10kg - ⁽⁷⁾ 200°C / 21.6 kg

(**) Temporary Specifications



SUSTAINABLE BLACK MASTERBATCHES

Ampacet Sustainable Black Masterbatches support the Circular Economy.

Name	CODE	Carrier	Low Warpage	Additives	MFI gram/10 mn	Specific gravity	Bulk density	EU food approved	Applications												COMMENTS
									LDPE		HDPE		PP		PET		PA	ABS	PS	EXT	
									IM	BM	IM	BM	IM	BM	IM	ISBM					
REC-O-BLACK 216	1900216-E	PE			min 20 ⁽²⁾	1.15	650	N	X	X	X	X	X	X							Sustainable Black grade composed of 95+ % recycled and recovered post-consumer feedstock (carbon black and carrier resin)
REC-NIR-BLACK PE 363A*	1900363-EA	PE	X	CaCO3	temp.	1.32	temp.	Y			X	X									Low warpage NIR-black solution with higher heat resistance and US FDA. With COTREP certification
REC-NIR-BLACK PE 374*	1900374-E	PE			temp.	1.02	temp.	Y											X		NIR-black solution for sheet extrusion with higher heat resistance and US FDA. With COTREP certification
REC-NIR-BLACK PE 449*	1900449-E	PE	X	INORG	temp.	1.33	temp.	Y	X	X	X	X							X		Deep NIR-black solution with COTREP certification
REC-NIR-BLACK PP 147*	4900147-E	PP	X		44 ^{(1)(**)}	1.00	500	Y					X	X							NIR-black solution with COTREP certification for PP applications
REC-NIR-BLACK COP 427*	1900427-E	UNI			temp.	1.04	temp.	Y	X				X				X				Universal NIR-black solution for technical polymers
REC-NIR-BLACK CP 441*	1900441-E	UNI	X	INORG	temp.	1.33	temp.	Y	X	X	X	X	X	X			X				Universal Deep NIR-black solution for technical polymers
REC-NIR-BLACK PS 039*	6900039-E	PS			NA	1.13	temp.	Y											X	X	General purpose NIR-black for polystyrene sheet applications
REC-NIR-BLACK SAN MB*	6900087-E	SAN	X		temp.	1.14	temp.	Y									X				NIR-black solution for ABS
REC-NIR-BLACK PBT 118*	7900118-E	PBT	X		NA	1.31	temp.	Y							X	X					Premium NIR-black solution for quick preforms heating
REC-NIR BLACK 135*	7900135-E	PBT	X	INORG	NA	1.96	temp.	Y							X	X					Premium DEEP NIR-black solution for PET with COTREP certification.

*Near-infrared (NIR) transparent to allow sorting with near-infrared optical sensors. Plastics Recycling Awards Europe 2019 WINNER in the category of Product Technology Innovation of the Year.



AMPACET ADDITIVE MASTERBATCH RANGE FOR MOLDING



ANTISTATIC MASTERBATCHES

Antistatic Masterbatches are added to prevent static charges build up on the product surface. Conventional antistatic agents are migrating to the surface, picking-up moisture molecules from the surrounding atmosphere and creating a thin water molecules layer dissipating electrical charges at the product surface. Permanent antistatic are, on the other side, creating a polymeric conductive network dissipating the electrical charge within the bulk on the polymer matrix.

								Applications										Remarks
Code	Carrier resin	Additive type	Loading	MFI gram/10 mn	Specific gravity	Bulk density	EU food approved	LDPE		HDPE		PP		PET		ABS	PS	
								IM	BM	IM	BM	IM	BM	IM	BM			
104355-E HD STAT	PE	PROP.	PROP.	27	0.96	540	Y			X	X	X	X					High performance long term Antistatic to avoid dust pick up in HDPE & PP
101395	PE	Blend	10%	4	0.92	520	Y	X	X	X	X	X	X					Prevents electrical static build up on the surface and avoids dust pick up. Short term & long term effect. Prevents the sticking of plastic articles after production
102421	PE	Short term AS	10%	18	0.98	500	Y	X	X	X	X	X	X					Prevents electrical static build up on the surface and avoids dust pick up. Short term effect
10053-A	PE	Long term	5.0%	11	0.98	520	Y	X	X	X	X							Prevents electrical static build up on the surface and avoids dust pick up. Long term effect. Recommended for LD and HDPE polymers
10007	PE	PROP.	PROP.	18	0.93	550	N	X		X		X						Amine-free short and long term Antistatic. Suitable for electronic packaging. Better efficiency at low humidity levels. Not food approved. Max process temp.220°C. Some efficiency limitations with HDPE

ANTIOXYDANT MASTERBATCHES

Antioxidant Masterbatches are used to avoid polymer degradation by oxidation during processing and / or by thermal degradation during ageing.

							Applications										Remarks
Code	Carrier resin	Loading	MFI gram/10 mn	Specific gravity	Bulk density	EU food approved	LDPE		HDPE		PP		PET		ABS	PS	
							IM	BM	IM	BM	IM	BM	IM	BM			
10886	PE	5%	10	0.92	470	Y	X	X	X	X	X	X					General purpose grade. Prevents the loss of physical and mechanical properties during processing and usage
100900-E	PE	PROP.	3	0.92	470	Y	X	X	X	X	X	X					High performance process stabilizer offering great stability and allowing a higher use of reprocessed materials
7000121-E	PBT	PROP.	temp.	1.28	temp.	Y							X	X			Highly efficient additive solution acting as heat stabilizer and antioxidant for PET. Stabilizes the rPET thus reducing yellowing due to polymer thermal degradation
7000119-E	PBT	PROP.	temp.	1.28	temp.	Y							X	X			Besides thermal stabilization package, contains an additional additive (blue toner) which counteracts and reduces existing yellowness of the recycled resin

MOLD RELEASE MASTERBATCHES

Mold Release Masterbatches are designed to improve the injection molding process by preventing the plastic product from sticking or hanging on the mold.

Code	Carrier resin	Additive type	Loading	MFI gram/10 mn	Specific gravity	Bulk density	EU food approved	Applications										Remarks
								LDPE		HDPE		PP		PET		ABS	PS	
								IM	BM	IM	BM	IM	BM	IM	BM			
102417	PE	Proprietary	10%	18	1.00	500	Y	X	X	X	X	X	X					Mold release with antistatic properties for polyolefins
40876	PP	Proprietary	6%	19 ⁽¹⁾	0.90	550	Y					X	X					Slip migrating mold release for PP applications
101724	PE	Proprietary	10%	12	0.92	570	Y	X	X	X	X	X	X					Non-migrating slip additive for easy release
100664-E	PE	Proprietary	16%	20	0.93	500	Y	X	X	X	X	X	X					Mold release based on vegetal additive for polyolefins

UV BARRIER MASTERBATCHES

UV Barrier Masterbatches are added to provide barrier properties to packaging containing Ultra-Violet light sensitive goods.

Code	Carrier resin	Additive type	Loading	MFI gram/10 mn	Specific gravity	Bulk density	EU food approved	Applications										Remarks
								LDPE		HDPE		PP		PET		ABS	PS	
								IM	BM	IM	BM	IM	BM	IM	BM			
703915	PET	Proprietary	PROP.	NA	1.30	740	Y							X	X			Cost effective UV Blocker for PET applications. Prevents contents from UV degradation. Barrier effect up to 360 nm
7000004-E	PET	Proprietary	PROP.	NA	1.31	700	Y							X	X			High efficient UV Blocker for PET applications. Very low LDR (0.25%). Prevents contents from UV degradation. Barrier effect up to 380 nm
104347-A	PE	UV Absorber blend	15%	7	1.00	530	Y	X	X	X	X	X	X					Highly efficient UV Blocker for molding applications. Prevents contents from UV degradation. Barrier effect up to 380 nm
4000206-E	PP	UV absorber	10%	temporary	0.95	temp.	Y					X	X					Highly efficient UV Blocker. Prevents contents from UV degradation designed for PP molding applications. Barrier effect up to 380 nm
100645	PE	UV Absorber	10%	7	0.96	530	Y	X	X	X	X							Highly efficient UV Blocker. Prevents contents from UV degradation designed for PE molding applications. Barrier effect up to 380 nm

UV STABILIZER MASTERBATCHES

UV Stabilizer Masterbatches are used to protect products from degradation when exposed to sunlight as well as from long term thermal degradation during prolonged end-uses.

Code	Carrier resin	Additive type	Loading	MFI gram/10 mn	Specific gravity	Bulk density	EU food approved	Applications										Remarks
								LDPE		HDPE		PP		PET		ABS	PS	
								IM	BM	IM	BM	IM	BM	IM	BM			
10561	PE	HALS	20%	19	0.94	500	Y	X	X	X	X	X	X					High loaded and high performant UV stabilizer. Prevents polymer from UV degradation protecting physical and mechanical properties
101727	PE	Blend HALS	10%	min 5	1.28	690	Y	X	X	X	X	X	X					Cost effective UV Stabilizer blend. Contains filler, only suitable for colored products
401311	PP	Blend HALS	20%	32 ⁽¹⁾	0.93	510	N					X	X					Designed especially for PP applications for non-food applications
10478-A	PE	HALS	10%	12	0.94	550	Y	X	X	X	X	X	X					General purpose
1001248-E	PE	UV Stabilizer	PROP.	temp.	0.93	temp.	Y	X	X	X	X							New generation of long-lasting UV stabilizers designed to extend the lifetime of PE-based outdoor plastic articles
4001248-E	PP	UV Stabilizer	PROP.	temp.	0.91	temp.	Y					X	X					New generation of long-lasting UV stabilizers designed to extend the lifetime of PP-based outdoor plastic articles

CLARIFIER MASTERBATCHES

Clarifier Masterbatches have been designed to clarify PP homopolymer and PP random copolymer.

Code	Carrier resin	Additive type	Loading	MFI gram/10 mn	Specific gravity	Bulk density	EU food approved	Applications										Remarks
								LDPE		HDPE		PP		PET		ABS	PS	
								IM	BM	IM	BM	IM	BM	IM	BM			
4000266-E	PP	Proprietary	PROP.	temporary	0.95	temp.	Y					X	X					High technology nucleating agent for PP. Significant improvement in clarity/gloss, reduced yellowness
4000061-E	PP	Proprietary	PROP.	8 ⁽¹⁾	0.91	490	Y					X	X					Cost-effective solution to enhance PP product clarity and gloss



SHRINKLESS MASTERBATCHES

Shrinkless Masterbatches are designed to minimize shrinkage and warpage phenomena.

								Applications										
Code	Carrier resin	Additive type	Loading	MFI gram/10 mn	Specific gravity	Bulk density	EU food approved	LDPE		HDPE		PP		PET		ABS	PS	Remarks
								IM	BM	IM	BM	IM	BM	IM	BM			
4000106-E	PP	Proprietary	PROP.	45 ⁽¹⁾	1.09	580	Y					X	X					Highly effective additive that minimizes shrinkage and warpage designed for PP molding applications
1000470-E	PE	Proprietary	PROP.	temporary	1.14	temp.	Y			X	X							Highly effective additive that minimizes shrinkage and warpage

ANTIMICROBIAL MASTERBATCHES

Antimicrobial Masterbatches ensure effective protection of plastic articles against a wide variety of harmful microorganisms and provide a safer environment to living species.

								Applications										Remarks
Code	Carrier resin	Additive type	Loading	MFI gram/10 mn	Specific gravity	Bulk density	EU food approved	LDPE		HDPE		PP		PET		ABS	PS	
								IM	BM	IM	BM	IM	BM	IM	BM			
1000684-E	UNI	Proprietary	PROP.	5	1.06	530	Y	X	X	X	X	X	X					Offers outstanding protection against microorganisms proliferation by blocking growth of bacteria and slowing down fungi multiplication. Inorganic silver-based technology



SLIP MASTERBATCHES

Slip Masterbatches enhance the manufacture of polyolefin-based products.

Code	Carrier resin	Additive type	Loading	MFI gram/10 mn	Specific gravity	Bulk density	EU food approved	Applications										Remarks
								LDPE		HDPE		PP		PET		ABS	PS	
								IM	BM	IM	BM	IM	BM	IM	BM			
10090	PE	Slow Migrating	5%	11	0.92	580	Y	X	X	X	X	X	X					Improves flow characteristics as well as denesting of plastic products. Long term effect
102420	PE	Blend	PROP.	11	1.05	600	Y	X	X	X	X	X	X					Combination of slip and antiblock additives. Improves flow characteristics during processing. Improves torque resistance and denesting of plastic products

FLAME RETARDANT MASTERBATCHES

Flame Retardant Masterbatches help to prevent plastic from dripping when coming into contact with flames, reduce flame from spreading, decrease the possibility of smoke formation and therefore increase resistance to fire.

Code	Carrier resin	Additive type	Loading	MFI gram/10 mn	Specific gravity	Bulk density	EU food approved	Applications										Remarks
								LDPE		HDPE		PP		PET		ABS	PS	
								IM	BM	IM	BM	IM	BM	IM	BM			
101185	PE	Proprietary	PROP.	5	2.14	1100		X	X	X	X	X	X					Halogenated flame retardant that enhances resistance to ignition by delaying the flaming and reducing fire spreading. Does not produce dioxins during combustion



SCRATCHSHIELD MASTERBATCHES

ScratchShield Masterbatches are specially designed for injection and blow molding applications to reduce and cover scratches originated during manufacturing, transport and handling processes.

Code	Carrier resin	Additive type	Loading	MFI gram/10 mn	Specific gravity	Bulk density	EU food approved	Applications										Remarks
								LDPE		HDPE		PP		PET		ABS	PS	
								IM	BM	IM	BM	IM	BM	IM	BM			
1000617-E	PE	Proprietary	PROP.	18	1.32	570	Y	X	X	X	X							Helps to avoid wear marks on polyolefin articles during manufacturing, transport and handling processes
4000396-E	PP	Proprietary	PROP.	temporary	0.93	temp.	N					X	X					Non-migrating additive that modifies the surface of the plastic to protect from abrasion, scratches and mar. Not suitable for food contact applications
4000412-E	PP	Proprietary	PROP.	temporary	0.91	temp.	Y					X	X					Efficient additive that migrates to the surface of the plastic article hence protecting it from scratches and mar. Designed for applications requiring food contact
6000047-E	SAN	Proprietary	PROP.	temporary	1.11	temp.	N									X		Non-migrating antiscratch solution formulated for a wide range of end applications such as appliances, home furnishings, automotive parts and electronic devices
6000056-E	SAN	Proprietary	PROP.	temporary	1.34	temp.	Y									X		Antiscratch solution formulated for a wide range of end applications such as appliances, home furnishings, automotive parts and electronic devices. Food approved solution
7000076-E	PBT	Proprietary	PROP.	temporary	1.27	temp.	Y							X	X			Protects preforms and bottles from abrasion and scratches. Improves demoulding of the preforms and, runnability on the conveyor-belt system during the manufacturing processes

PURGE MASTERBATCHES

Purge Masterbatches are used to expedite the changeover from one color / resin to another.

Code	Carrier resin	Additive type	Loading	MFI gram/10 mn	Specific gravity	Bulk density	EU food approved	Applications										Remarks
								LDPE		HDPE		PP		PET		ABS	PS	
								IM	BM	IM	BM	IM	BM	IM	BM			
103476	PE	Proprietary	PROP.	7.5	1.92	750	Y	X	X	X	X	X	X					Enables efficient cleaning between color sequences to save time, energy and polymer consumption. Not recommended for hot runners
400882-B	PROP.	Proprietary	PROP.	5	0.92	-	N					X	X					Specially designed for hot runners injection molding process

NUCLEATING MASTERBATCHES

Nucleating Masterbatches improve mechanical properties and stiffness of palstic parts.

Code	Carrier resin	Additive type	Loading	MFI gram/10 mn	Specific gravity	Bulk density	EU food approved	Applications										Remarks
								LDPE		HDPE		PP		PET		ABS	PS	
								IM	BM	IM	BM	IM	BM	IM	BM			
103293-E	PP	Proprietary	PROP.	22 ⁽¹⁾	0.84	550	Y					X	X					Nucleating agent for polypropylene. Provides combination of high crystallization temperature in the polymer and isotropic shrinkage in the final part. Reduces warpage, sink marks or molding defects
4000389-E	PP	Proprietary	PROP.	temp.	0.92	temp.	Y					X	X					Enhances the mechanical properties (stiffness, rigidity) of virgin and recycled polypropylene. Enables downgauging of injected or thermoformed plastic parts. Improves clarity and transparency



LASER MARKING MASTERBATCHES

Laser Marking Masterbatches for marking logos, barcodes, graphics, expiration dates and serial numbers in a number of industries, including food packaging, automotive, medical and electronics.

Code	Carrier resin	Additive type	Loading	MFI gram/10 mn	Specific gravity	Bulk density	EU food approved	Applications										Remarks
								LDPE		HDPE		PP		PET		ABS	PS	
								IM	BM	IM	BM	IM	BM	IM	BM			
1001074-E	PE	Proprietary	PROP.	temporary	0.93	temp.	Y	X	X	X	X	X	X					Cost effective antimony-free solution developed to achieve sharp dark markings on transparent or light colored plastic parts with an NdYAG laser (1064 nm)
1001088-E	PE	Proprietary	PROP.	temporary	0.95	temp.	Y	X	X	X	X	X	X					High contrast laser marking solution designed for complex projects featuring. Offers a dark or clear markings according to the shade of the plastic part using a NdYAG laser (1064 nm)
1001135-E	PE	Proprietary	PROP.	temporary	0.95	temp.	Y	X	X	X	X	X	X					More concentrated version of code 1001088-E
1000250-E	PE	Proprietary	PROP.	temporary	1.14	temp.	N	X	X	X	X	X	X					Cost effective solution. Usually dark marks but can be slightly lighter at lower wavelengths. Antimony based with an NdYAG laser (1064 nm)



(¹) 230°C / 2.16 kg - (²) 190°C / 21.6 kg - (³) 190°C / 10 kg - (⁴) 230°C / 10 kg - (⁵) 200°C / 5kg - (⁶) 200°C / 10kg - (⁷) 200°C / 21.6 kg

(**) Temporary Specifications

SUSTAINABLE ADDITIVE MASTERBATCHES

Ampacet Sustainable Additive Masterbatches support the Circular Economy.

Name	Code	Carrier resin	Additive type	Loading	MFI gram/10 mn	Specific gravity	Bulk density	EU food approved	Applications										Remarks
									LDPE		HDPE		PP		PET		ABS	PS	
									IM	BM	IM	BM	IM	BM	IM	BM			
Foaming agent	103357	UNI	PROP.	PROP.	NA	NA	450	Y	X		X		X						Reduces product weight. Prevents sink marks, reduces cycle times
Foaming agent	1000423-E	UNI	PROP.	PROP.	NA	NA	600	Y	X		X		X						Reduces product weight. Prevents sink marks, reduces cycle times
Odor Clear	1000258-E	PE	PROP.	PROP.	8	1.19	600	Y	X	X	X	X	X	X					Odor absorbing additive designed to trapp odors of post-consumer recycled material. Food approved solution
Odor Clear	1001222-E	PE	PROP.	PROP.	temp.	1.21	temp.	N	X	X	X	X	X	X					Cost effective odor absorbing solution designed to trapp odors of post-consumer recycled material
Blue Edge	7000024-E	PET	PROP.	PROP.	NA	1.34	750	Y							X	X			BLUE EDGE 24 counteracts the yellowish/brownish “dirty” effect of post-consumer recycled plastics. Enhances the bottle brightness giving a fresher look
Blue Edge	7600078-E	PBT	PROP.	PROP.	NA	1.29	720	Y							X	X			BLUE EDGE 78 counteracts the yellowish/brownish “dirty” effect of post-consumer recycled plastics. Enhances the bottle brightness with a lighter bluish tone giving fresher look
Green Edge	7700288-E	PBT	PROP.	PROP.	NA	1.30	temp.	Y							X	X			GREEN EDGE counteracts the yellowish/brownish “dirty” effect of post-consumer recycled plastics. Enhances the bottle brightness with a lighter greenish tone giving fresher look



AMPACET COLOR MASTERBATCHES FOR MOLDING



NIR-SORTABLE COLOR MASTERBATCHES

Ampacet NIR-detectable range of color masterbatches covers the entire spectrum of standard colors.

Product Code	Description	Color	Heat Resistance	Light Resistance
12116-A	Oyster Pearl		290	7
12110-A	Silver Grey Metallic		290	7
12624	Harvest Gold		290	7
132564	Lemon Yellow		290	7
13633-BH	Buttercup Yellow		260	7
13671-H	Egg Yolk Yellow		260	7
130245	Sunglow Yellow		240	7
1400320-E	Dark Orange		240	7
141125	Sunrise Orange		240	3
14304-BH	Tangerine Orange		250	7

Product Code	Description	Color	Heat Resistance	Light Resistance
150844	Pillar Box Red		240	3
15905-H	Orangy Red		240	4
15947	Royal Red		240	4
150166	Coral Red		270	7
15936	Claret Red		240	5
15853	Rose Pink		240	5
15939	Lavendar Violet		240	6
16058	Metallic Blue		290	7
16057	Turquoise Blue		290	7
1601011-E	Baby Blue		290	7

Product Code	Description	Color	Heat Resistance	Light Resistance
16000-A	Sea Blue		280	7
161515-B	Royal Blue		290	7
16900	Medium Blue		280	7
16056	Sapphire Blue		280	7
16059	Midnight Blue		290	7
160287	Navy Blue		240	6
17977-A	Translucent Green		290	7
17856	Mint Green		290	7
173937	Harlequin Green		250	7
172121	Moss Green		240	7

Product Code	Description	Color	Heat Resistance	Light Resistance
17873-AH	Pea Green		260	7
172871	Jade Green		240	6
17003-H	Lawn Green		240	7
1700561-E	Forest Green		260	7
13742	Light Ivory		240	6
18874	Tan Brown		240	7
18890	Desert Sand Beige		250	7
18932-A	Terracotta Brown		290	7
15194	Burgundy Red		240	4
19912	Dawn Grey		290	7



OUR COLOR SERVICES

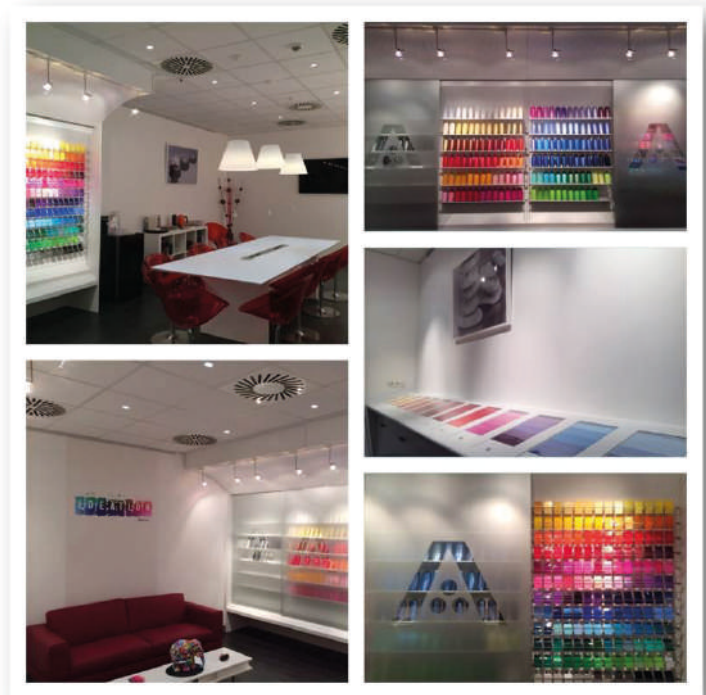
- express color matching service with a support from your local sales representative and our Color Team
- color matching on Pantone that allows quick cost evaluation of projects
- color matching of plastic articles containing various amount of post-consumer recycled resins (rPE, rPET, rABS) to support your Circular Economy initiatives
- recommendations to ensure proper color consistency with post-consumer recycled resins
- offering PCR as a carrier to optimize post-consumer recycled resin content or to meet your sustainability goals
- wide range of customizable special effect colors to differentiate your products
- color formula transfer across regions to support global projects
- production flexibilities from 25 kg to 25T



Our concept “**Ideation**” helps to bring products quicker to the market.

A concept that offers to our customers a creative environment where you will journey from an “idea to a realisation” going through three main steps: **Innovation, Development and Actualisation**.

Creative elements will be delivered in a variety of articles in a myriad of colors and Ampacet’s professional team will be present to ensure the necessary expertise to deliver you final products **quicker to the market**.



*Ideation Center in Luxembourg
&
Design Center in United Kingdom*

CONTACT DETAILS:

BENELUX Tel: +352 29 20 99 571 / 560

FRANCE Tel: 0800 913 015

GERMANY Tel: 0800 182 0013 / 0015

AUSTRIA

SWITZERLAND Tel: +352 29 20 99 542 / 544

ITALY Tel: +39 0331 566 722

SPAIN Tel: 900 983 528

PORTUGAL Tel: +352 29 20 99 561

UK

IRELAND Tel: +352 29 20 99 557

NORWAY / ICELAND

DENMARK / FINLAND

SWEDEN Tel: +352 29 20 99 554

FINLAND Tel: 0800 111 857

BALTIC STATES Tel: +352 29 20 99 554

**SOUTH &
EASTERN EUROPE** Tel: +48 22 332 35 10 / 27

RUSSIA

BELARUS Tel: +352 29 20 99 554

GREECE

ISRAEL Tel: +48 22 332 35 10 / 27

MEA

(Dubai Headquarters) Tel: +971 4 551 95 49

AMPACET

Ampacet European Headquarters

Z.A.E. Wolser H, 130

L-3451 Dudelange, Luxembourg

marketing.europe@ampacet.com

www.ampacet.com

